

FISH&PIPS

Chalet Braye
Ground floor



South facing terrace

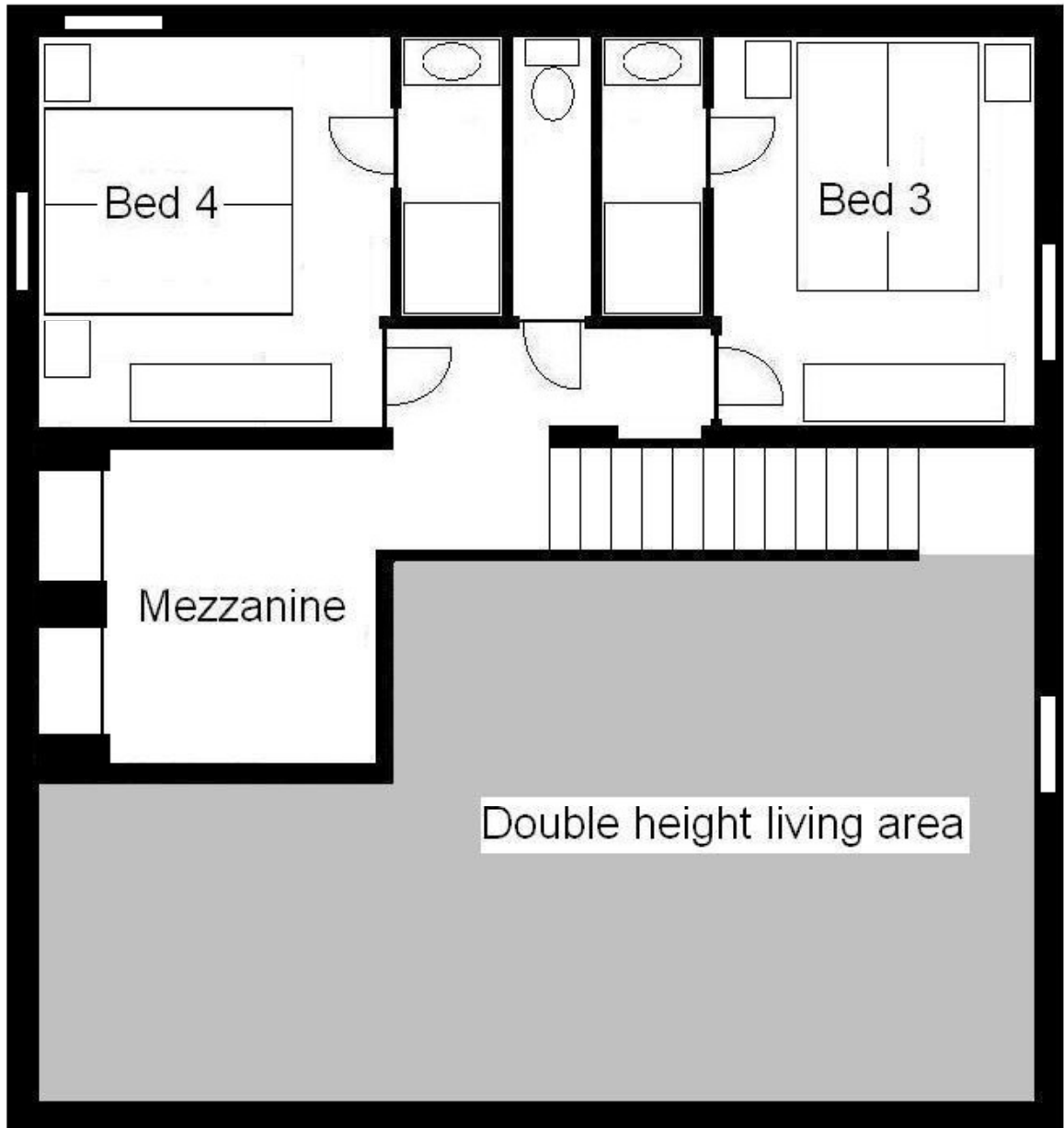
Chalet Braye	
Bedroom 1	10.05
Bedroom 2	10.1
Mezzanine	6.66
Bedroom 3	10.15
Bedroom 4	10.2
Saloon	22.86
Kitchen	6.25
TOTAL m2	82.62

Floor plans designed & built by **RUNNING REPAIRS**

Not to scale

FISH & PIPS

Chalet Braye 1st floor



Floor plans designed & built by **RUNNING REPAIRS**

Not to scale